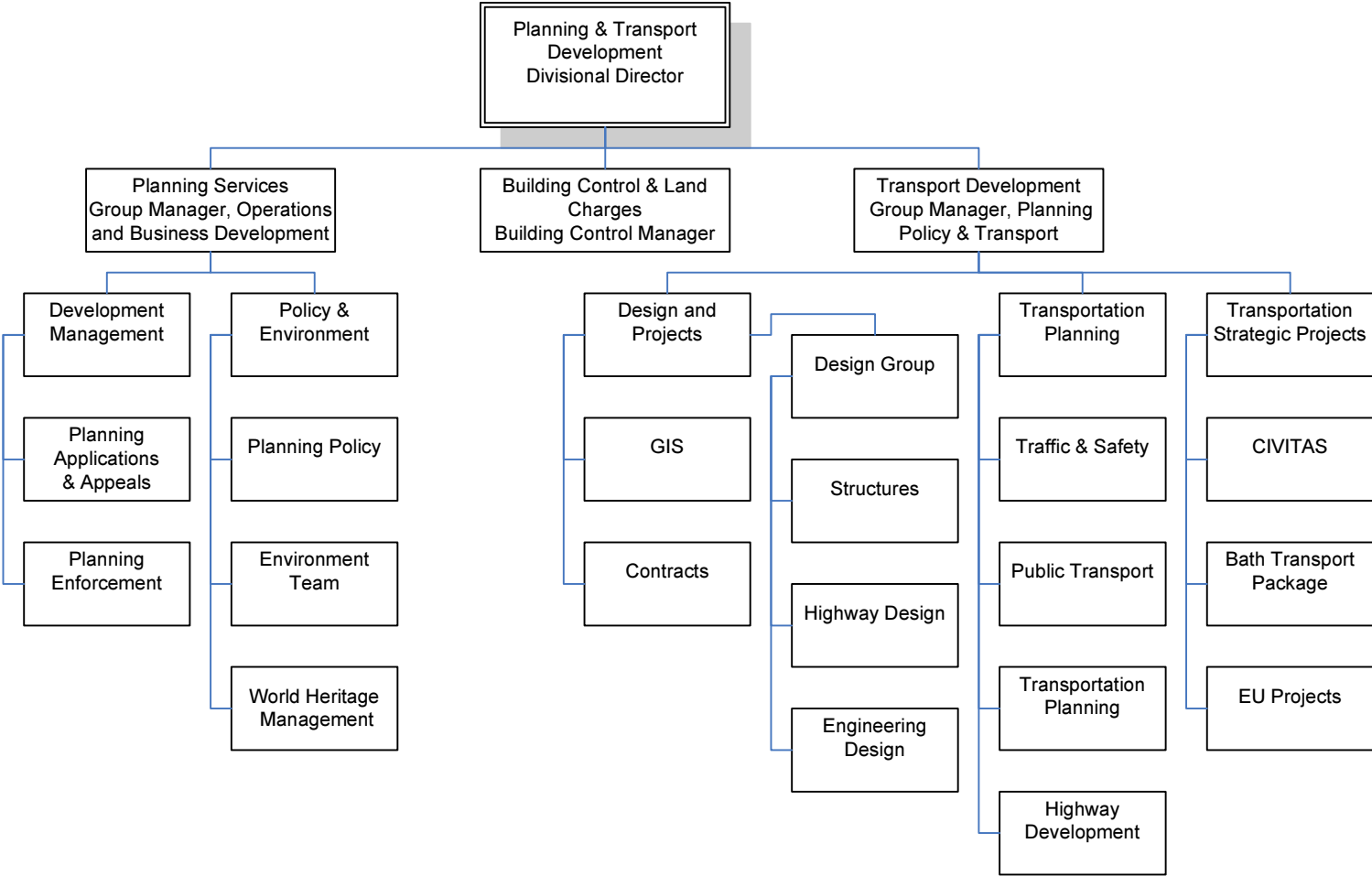


Bath & North East Somerset Council Planning & Transport Development Service Structure



Making Bath & North East Somerset an **even** better place to live, work and visit

Planning & Transport Development Contacts List		
Divisional Director - Planning and Transport Development - David Trigwell 01225 394125		
Planning Services	Building Control & Land Charges	Transport Development
General Enquiries 01225 394041 Group Manager, Operations and Business Development - Baljit Tiwana 01225 477683 Development Manager - Lisa Bartlett 01225 477281 Planning Applications & Appeals Team Leader - Andrew Ryall 01225 477576 Planning Applications & Enforcement Team Leader - Christine Caistor 01225 477572 Historic Environment Team Leader - Ian Lund 01225 477687 Policy & Environment Manager - Simon de Beer 01225 477616 Planning Policy Team Leader - Richard Daone 01225 477546 Team Leader - Environment - Mark Minkley 01225 477588 World Heritage Manager - Tony Crouch 01225 477584	General Enquiries 01225 477517/8 Building Control Manager - Phil Mansfield 01225 477541 Land Charges Team Leader - Roz Bracey 01225 477092	General Enquiries 01225 394041 Group Manager, Planning Policy & Transport - Peter Dawson 01225 395181 Design & Projects Manager - Steve Froggatt 01225 395239 Design Group Manager - Steve Moore 01225 394178 Team Leader - Systems & GIS - Martin Laker 01225 394344 Highway Design Team Leader - Shane Charles 01225 394209 Transportation Planning Manager - Adrian Clarke 01225 395223 Team Leader Traffic and Safety - Nick Jeanes 01225 394256 Public Transport Team Leader - Andy Strong 01225 394201 Transportation Planning Team Leader - Rab Smith 01225 395235 Highways Development Control Team Leader - David Horne 01225 394462 Strategic Transport Projects Manager - Joy Jefferys 01225 394446 Team Leader Public Transport - Colin Rees 01225 395101 Team Leader, Engineering Design GBBN - Gary Peacock 01225 395307

Making Bath & North East Somerset an even better place to live, work and visit

Planning Services

The **Development Management** Section is principally responsible for the operation of the statutory Development Control system across the entire Bath and North East Somerset district. The Section Management Team leads a group of qualified Town Planners and support staff who handle an average 2,600 Planning Applications each year. Work on Appeals is managed by a designated Co-ordinator. The Development Management Section considers applications for planning permission, processes appeals, operates the planning enforcement role, and is also responsible for the provision of general planning advice to applicants, agents and the general public. It deals with correspondence representations about planning applications and associated issues, and produces detailed reports and assessments of every application.

The **Planning Policy** Team produces the Local Development Framework which contains statutory documents to guide and encourage future development in the District, while ensuring that the character of places that are valued is preserved and enhanced. Planning policy also plays a vital role in supporting social, environmental and economic objectives for the district and in supporting the creation of sustainable communities.

Ecology is the study of living things in their natural habitats. B&NES **Environment Team** has a key role in delivering the local Biodiversity Action Plan through the Wildthings Partnership. Bath & North East Somerset is home to a vast array of interesting and rare species and habitats. The Team manage & maintain 49 hectares of formal parkland as well as over 200 hectares of public open space, some highway verges & sports grounds.

Building Control & Land Charges

The **Building Control** section is responsible for providing the following services: Building Regulations, Control of Dangerous Structures, Structural Analysis, Control of Demolition Work and the Protection of the thermal water springs in Bath. The Local **Land Charges** section is responsible for maintaining the Local Land Charges Register and providing the Council's Local Authority Searches.

Transport Development

Design and Projects works closely with the Highways Team. Design and Projects manages the design and implementation of major highway maintenance and improvement schemes. This area is also responsible for the inspection of the many highway structures within the district. The Team manages the Council's Geographical Information System (GIS). GIS is a map based system for capturing, managing, analysing & displaying information.

Local Transport Plans (LTPs) are produced by the **Transportation Planning Team** and these are submitted to the government. For the second LTP the Councils from the West of England area (Bath and North East Somerset, Bristol City, North Somerset and South Gloucestershire) have together to produce a Joint Local Transport Plan (JLTP). The four councils are working in partnership to plan and deliver transport improvements in

Making Bath & North East Somerset an
even better place to live, work and visit

the west of England. The Joint Local Transport Plan is the first step towards this, setting out our plans for improving transport over the next five years (2006-2011) and a longer-term vision, looking ahead 20 - 30 years. The West of England Partnership co-ordinates the Joint Local Transport Plan, the major schemes and work on cross-boundary transport issues.

The **Traffic and Road Safety Team** deal with the high priority issues of highway safety by the Council. The Council receives numerous and diverse requests for advice or assistance from people experiencing traffic problems. The means of tackling traffic available to the Council are many and varied, ranging from simple white lines to computerised traffic signal installations on the engineering side, allied to numerous training courses for drivers, riders and pedestrians by the Team's education, training & publicity section.

Bath and North East Somerset Council is planning significant improvements for **public transport** throughout the area to tackle traffic congestion and deliver our vision priority of improving transport and the public realm. The Council wants to support better public transport to encourage people out of their cars and onto local buses, whether Park and Ride or conventional services.

The **Transportation Strategic Projects Team** manages The Bath Transportation Package (BTP). A £54 million scheme designed to tackle congestion in Bath and the surrounding area by improving public transport and enhancing pedestrian access for the benefit of residents, commuters and visitors. It also manages other major transport schemes such as CIVITAS - a European Union funded initiative that helps cities to achieve a more sustainable, clean and energy efficient urban transport system by implementing and evaluating an ambitious, integrated set of technology and policy based measures.

Making Bath & North East Somerset an
even better place to live, work and visit